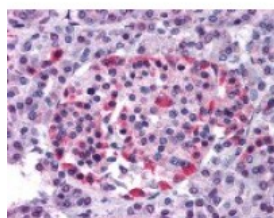




## GPR81 Antibody

CATALOG NUMBER: 48-145



Immunohistochemistry staining of GPR81  
in pancreas tissue using GPR81 Antibody.

### Specifications

<b>SPECIES REACTIVITY:</b>	Human, Monkey
<b>TESTED APPLICATIONS:</b>	ELISA, IHC
<b>APPLICATIONS:</b>	GPR81 antibody can be used in immunohistochemistry starting at 2.5 ug/mL.
<b>USER NOTE:</b>	Optimal dilutions for each application to be determined by the researcher.
<b>SPECIFICITY:</b>	BLAST analysis of the peptide immunogen showed no homology with other human proteins.
<b>IMMUNOGEN:</b>	GPR81 antibody was raised against a peptide located in the N-Terminal extracellular domain of GPR81 (Human).
<b>HOST SPECIES:</b>	Rabbit

### Properties

<b>PURIFICATION:</b>	Immunoaffinity Chromatography
<b>PHYSICAL STATE:</b>	Liquid
<b>BUFFER:</b>	PBS, 0.1% sodium azide.
<b>STORAGE CONDITIONS:</b>	GPR81 antibody should be stored long term (months) at -80 °C and short term (days) at 4 °C. As with all antibodies avoid freeze/thaw cycles.
<b>CLONALITY:</b>	Polyclonal
<b>CONJUGATE:</b>	Unconjugated

### Additional Info

<b>ALTERNATE NAMES:</b>	HCAR1, FKSG80, G protein-coupled receptor 81, G-protein coupled receptor 104, G protein-coupled receptor 104, G-protein coupled receptor 81, GPR81, GPR104, LACR1, HCA1, TA-GPCR, Lactate receptor 1
<b>ACCESSION NO.:</b>	Q9BXC0
<b>PROTEIN GI NO.:</b>	47117701
<b>OFFICIAL SYMBOL:</b>	HCAR1
<b>GENE ID:</b>	27198

### Background

<b>BACKGROUND:</b>	The receptor FKSG80/GPR81 is a member of the Chemokine Receptor subfamily.
--------------------	----------------------------------------------------------------------------

