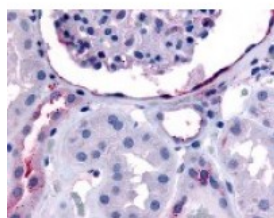




## ERBB4 Antibody

CATALOG NUMBER: 48-220



Immunohistochemistry staining of ERBB4  
in glomerulus and renal tubular epithelium  
in cortex tissue using ERBB4 Antibody.

### Specifications

<b>SPECIES REACTIVITY:</b>	Gibbon, Gorilla, Human, Monkey
<b>TESTED APPLICATIONS:</b>	IHC
<b>APPLICATIONS:</b>	ERBB4 antibody can be used in ELISA, Western Blot starting at 1:500 - 1:1000, and immunohistochemistry starting at 5 ug/mL.
<b>USER NOTE:</b>	Optimal dilutions for each application to be determined by the researcher.
<b>SPECIFICITY:</b>	BLAST analysis of the peptide immunogen showed no homology with other human proteins, except ERBB3 (60%).
<b>IMMUNOGEN:</b>	ERBB4 antibody was raised against an internal region of ERBB4 (Human).
<b>HOST SPECIES:</b>	Rabbit

### Properties

<b>PURIFICATION:</b>	Immunoaffinity Chromatography
<b>PHYSICAL STATE:</b>	Liquid
<b>BUFFER:</b>	PBS, 0.1% sodium azide.
<b>STORAGE CONDITIONS:</b>	ERBB4 antibody should be stored long term (months) at -80 °C and short term (days) at 4 °C. As with all antibodies avoid freeze/thaw cycles.
<b>CLONALITY:</b>	Polyclonal
<b>CONJUGATE:</b>	Unconjugated

### Additional Info

<b>ALTERNATE NAMES:</b>	ERBB4, ERBB 4, HER4, p180 erb4, p180erbB4
<b>ACCESSION NO.:</b>	Q15303
<b>PROTEIN GI NO.:</b>	3913590
<b>OFFICIAL SYMBOL:</b>	ERBB4
<b>GENE ID:</b>	2066

## Background

**BACKGROUND:** ERBB-4 receptor tyrosine kinase is activated by neuregulins, nrg- 2, nrg-3, heparin-binding egf-like growth factor, betacellulin and ntak to regulate cell proliferation and differentiation. Several isoforms of the ERBB-4 receptor tyrosine kinase have been identified and differ functionally in their response to phorbol ester: they represent cleavable and noncleavable forms of the receptor. These isoforms are differentially expressed in tissues.

---

**FOR RESEARCH USE ONLY**

December 13, 2016