

## Anti-MOUSE IgG1 (Gamma 1 chain) (RABBIT) Antibody Peroxidase Conjugated - 610-4340

**Code:** 610-4340

**Size:** 1 mg

**Product Description:** Anti-MOUSE IgG1 (Gamma 1 chain) (RABBIT) Antibody Peroxidase Conjugated - 610-4340

**Concentration:** 1.0 mg/mL by UV absorbance at 280 nm

**PhysicalState:** Lyophilized

<b>Label</b>	Peroxidase (Horseradish)
<b>Host</b>	Rabbit
<b>Buffer</b>	0.02 M Potassium Phosphate, 0.15 M Sodium Chloride, pH 7.2
<b>Stabilizer</b>	10 mg/mL Bovine Serum Albumin (BSA) - Immunoglobulin and Protease free
<b>Preservative</b>	0.01% (w/v) Gentamicin Sulfate. Do NOT add Sodium Azide!
<b>Storage Condition</b>	Store secondary antibody at 4° C prior to restoration. For extended storage aliquot contents and freeze at -20° C or below. Avoid cycles of freezing and thawing. Centrifuge product if not completely clear after standing at room temperature. This product is stable for several weeks at 4° C as an undiluted liquid. Dilute only prior to immediate use.
<b>Synonyms</b>	HRP IgG1 antibody, anti mouse igg1 conjugated antibody
<b>Background</b>	Mouse IgG1 secondary antibody conjugated to HRP is available in a variety of formats. Anti Mouse IgG1 secondary antibody conjugate is suitable for ELISA, Immunohistochemistry western blotting as well as other anti IgG1 antibody based assays.
<b>Purity And Specificity</b>	This product was prepared from monospecific antiserum by immunoaffinity chromatography using Mouse IgG coupled to agarose beads followed by solid phase adsorption(s) to remove any unwanted reactivities. Assay by immunoelectrophoresis resulted in a single precipitin arc against anti-Peroxidase, anti-Rabbit Serum, Mouse IgG and Mouse Serum. Specificity was confirmed by ELISA against other mouse or human heavy chain isotypes. Cross reactivity with Mouse IgG2b and IgG3 is negligible (<0.5%). Cross reactivity with Mouse IgG2a and IgM is minimal.
<b>Assay Dilutions</b>	User Optimized
<b>ELISA</b>	1:300,000
<b>Immunohistochemistry</b>	1:500 - 1:2,500
<b>WESTERN BLOT</b>	1:2,000 - 1:10,000
<b>IHC</b>	1:500 - 1:2,500
<b>OTHER ASSAYS</b>	User Optimized
<b>Expiration</b>	Expiration date is one (1) year from date of opening.
<b>Immunogen</b>	Mouse IgG1 heavy chain
<b>Related Products</b>	

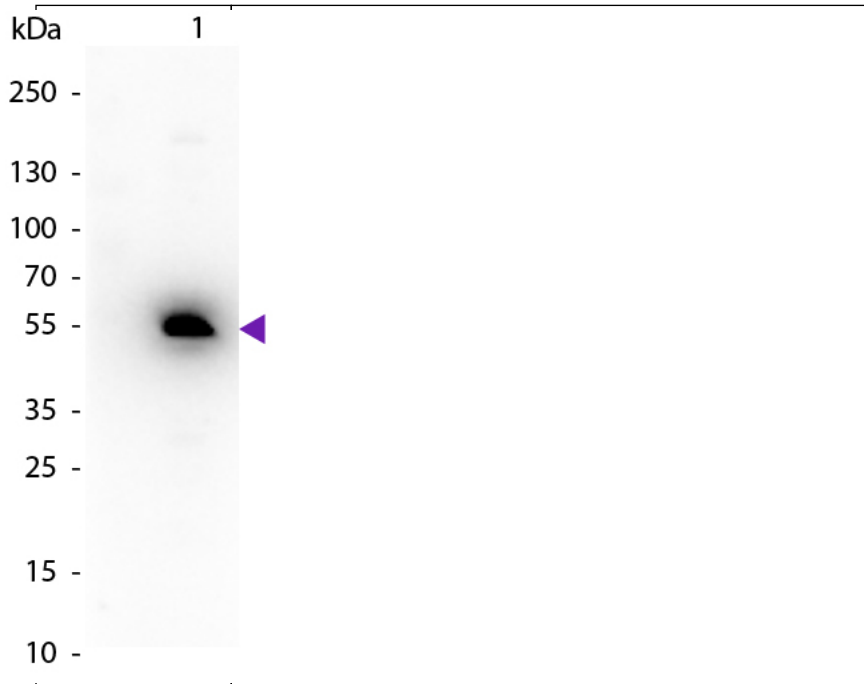
610-4302	Anti-MOUSE IgG (H&L) (RABBIT) Antibody Peroxidase Conjugated - 610-4302
611-1302	Anti-RABBIT IgG (H&L) (GOAT) Antibody Peroxidase Conjugated - 611-1302
B304	NORMAL GOAT SERUM (NGS) - B304
BSA-50	BOVINE SERUM ALBUMIN - Fraction V (Immunoglobulin and Protease Free) - BSA-50

### Related Links

### Images

1	Western blot of Peroxidase conjugated Rabbit Anti-Mouse IgG1 (Gamma 1 chain) secondary antibody. Lane 1: Mouse IgG1. Lane 2: None. Load: 50 ng per lane. Primary antibody: None. Secondary
---	--

antibody: Peroxidase rabbit secondary antibody at 1:1,000 for 60 min at RT.Blocking: MB-070 for 30 min at RT.Predicted/Observed size: 55 kDa, 55 kDa for Mouse IgG1 (Gamma 1 chain).Other band(s): None.



#### Disclaimer

This product is for research use only and is not intended for therapeutic or diagnostic applications. Please contact a technical service representative for more information. All products of animal origin manufactured by Rockland Immunochemicals are derived from starting materials of North American origin. Collection was performed in United States Department of Agriculture (USDA) inspected facilities and all materials have been inspected and certified to be free of disease and suitable for exportation. All properties listed are typical characteristics and are not specifications. All suggestions and data are offered in good faith but without guarantee as conditions and methods of use of our products are beyond our control. All claims must be made within 30 days following the date of delivery. The prospective user must determine the suitability of our materials before adopting them on a commercial scale. Suggested uses of our products are not recommendations to use our products in violation of any patent or as a license under any patent of Rockland Immunochemicals, Inc. If you require a commercial license to use this material and do not have one, then return this material, unopened to: Rockland Inc., P.O. BOX 326, Gilbertsville, Pennsylvania, USA.