

Name: Rabbit polyclonal anti-HTR7 antibody
Product Data Sheet - ANTIBODY**Catalog: TA314047**

Components:	• Rabbit polyclonal anti-HTR7 antibody (TA314047)
Amount:	100ul
Immunogen:	The antiserum was produced against synthesized peptide derived from internal of human HTR7.
Host:	Rabbit
Isotype:	IgG
Species Reactivity:	Human, Mouse, Rat
Guaranteed Applications:	IF
Suggested Dilutions:	IF: 1:100~1:500, ELISA: 1:5000
Concentration:	1mg/ml
Buffer:	Phosphate buffered saline (without Mg ²⁺ and Ca ²⁺), pH 7.4, 150mM NaCl, 0.02% sodium azide and 50% glycerol.
Purification:	The antibody was affinity-purified from rabbit antiserum by affinity-chromatography using epitope-specific immunogen.
Storage Condition:	Shipped at -20C. Upon delivery store at -20C. Dilute in PBS (pH7.3) if necessary. Stable for 12 months from date of receipt. Avoid repeated freeze-thaws.

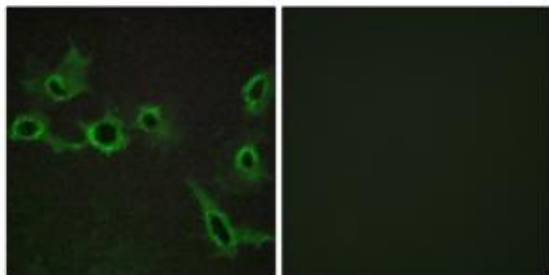
Target

Target Name:	Homo sapiens 5-hydroxytryptamine (serotonin) receptor 7, adenylate cyclase-coupled (HTR7), transcript variant a
Alternative Name:	5-HT7
Database Link:	NP_000863
Function:	

This product is to be used for laboratory only. Not for diagnostic or therapeutic use.

© 2014 OriGene Technologies, Inc. 9620 Medical Center Dr., Suite 200, Rockville, MD 20850

Validation Data



Immunofluorescence analysis of COS-7 cells, using HTR7 antibody. The picture on the right is treated with the synthesized peptide.

* More validation images may be available on our website: <http://www.origene.com/antibody/TA314047.aspx>

This product is to be used for laboratory only. Not for diagnostic or therapeutic use.

© 2014 OriGene Technologies, Inc. 9620 Medical Center Dr., Suite 200, Rockville, MD 20850
