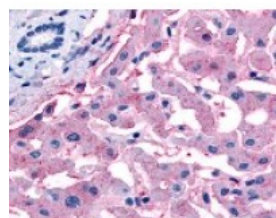




SLC5A4 Antibody

CATALOG NUMBER: 48-168



Immunohistochemistry staining of SLC5A4
in liver tissue using SLC5A4 Antibody.

Specifications

SPECIES REACTIVITY:	Gorilla, Human
TESTED APPLICATIONS:	IHC
APPLICATIONS:	SLC5A4 antibody can be used in ELISA, Western Blot starting at 1:500 - 1:1000, immunohistochemistry starting at 5 ug/mL, and immunofluorescence starting at 10 ug/mL.
USER NOTE:	Optimal dilutions for each application to be determined by the researcher.
SPECIFICITY:	BLAST analysis of the peptide immunogen showed no homology with other human proteins.
IMMUNOGEN:	SLC5A4 antibody was raised against a peptide located in the C-Terminal domain of SLC5A4 (Human).
HOST SPECIES:	Rabbit

Properties

PURIFICATION:	Immunoaffinity Chromatography
PHYSICAL STATE:	Liquid
BUFFER:	PBS, 0.1% sodium azide.
STORAGE CONDITIONS:	SLC5A4 antibody should be stored long term (months) at -80 °C and short term (days) at 4 °C. As with all antibodies avoid freeze/thaw cycles.
CLONALITY:	Polyclonal
CONJUGATE:	Unconjugated

Additional Info

ALTERNATE NAMES:	SLC5A4, DJ90G24.4, Na(+)/glucose cotransporter 3, SAAT11, SGLT2, Sodium transporter, Sodium/glucose cotransporter 3, SAAT1, SGLT3
ACCESSION NO.:	Q9NY91
PROTEIN GI NO.:	17433306
OFFICIAL SYMBOL:	SLC5A4
GENE ID:	6527

Background

