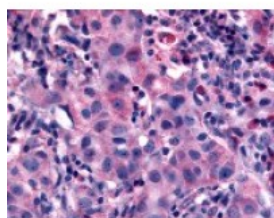




NANP Antibody

CATALOG NUMBER: 48-211



Immunohistochemistry staining of NANP
in neoplastic cells using NANP Antibody.

Specifications

SPECIES REACTIVITY:	Gibbon, Gorilla, Human, Monkey
TESTED APPLICATIONS:	IHC
APPLICATIONS:	NANP antibody can be used in ELISA, Western Blot, immunohistochemistry starting at 5 ug/mL, and immunofluorescence starting at 10 ug/mL.
USER NOTE:	Optimal dilutions for each application to be determined by the researcher.
SPECIFICITY:	BLAST analysis of the peptide immunogen showed no homology with other human proteins.
IMMUNOGEN:	NANP antibody was raised against a peptide located in the N-Terminal region of NANP (Human).
HOST SPECIES:	Rabbit

Properties

PURIFICATION:	Immunoaffinity Chromatography
PHYSICAL STATE:	Liquid
BUFFER:	PBS, 0.1% sodium azide.
STORAGE CONDITIONS:	NANP antibody should be stored long term (months) at -80 °C and short term (days) at 4 °C. As with all antibodies avoid freeze/thaw cycles.
CLONALITY:	Polyclonal
CONJUGATE:	Unconjugated

Additional Info

ALTERNATE NAMES:	NANP, C20orf147, DJ694B14.3, Neu5Ac-9-Pase, HDHD4
ACCESSION NO.:	Q8TBE9
PROTEIN GI NO.:	30315932
OFFICIAL SYMBOL:	NANP
GENE ID:	140838

Background

