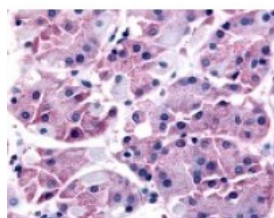




SLC7A11 Antibody

CATALOG NUMBER: 48-218



Immunohistochemistry staining of
SLC7A11 in chief cells using SLC7A11
Antibody.

Specifications

SPECIES REACTIVITY:	Gibbon, Gorilla, Human, Orangutan
TESTED APPLICATIONS:	IHC
APPLICATIONS:	SLC7A11 antibody can be used in ELISA, and immunohistochemistry starting at 5 ug/mL.
USER NOTE:	Optimal dilutions for each application to be determined by the researcher.
SPECIFICITY:	BLAST analysis of the peptide immunogen showed no homology with other human proteins.
IMMUNOGEN:	SLC7A11 antibody was raised against a peptide located in the N-Terminal region of SLC7A11 (Human).
HOST SPECIES:	Rabbit

Properties

PURIFICATION:	Immunoaffinity Chromatography
PHYSICAL STATE:	Liquid
BUFFER:	PBS, 0.1% sodium azide.
STORAGE CONDITIONS:	SLC7A11 antibody should be stored long term (months) at -80 °C and short term (days) at 4 °C. As with all antibodies avoid freeze/thaw cycles.
CLONALITY:	Polyclonal
CONJUGATE:	Unconjugated

Additional Info

ALTERNATE NAMES:	SLC7A11, CCB1, Cystine/glutamate transporter, XCT
ACCESSION NO.:	Q9UPY5
PROTEIN GI NO.:	12585385
OFFICIAL SYMBOL:	SLC7A11
GENE ID:	23657

Background

